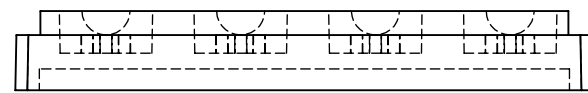
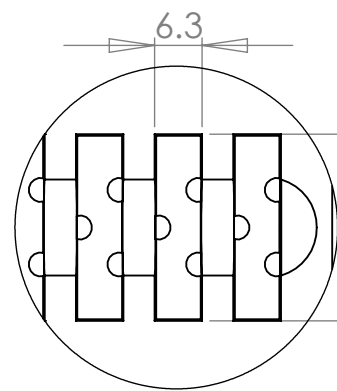


TOP VIEW OF BASE

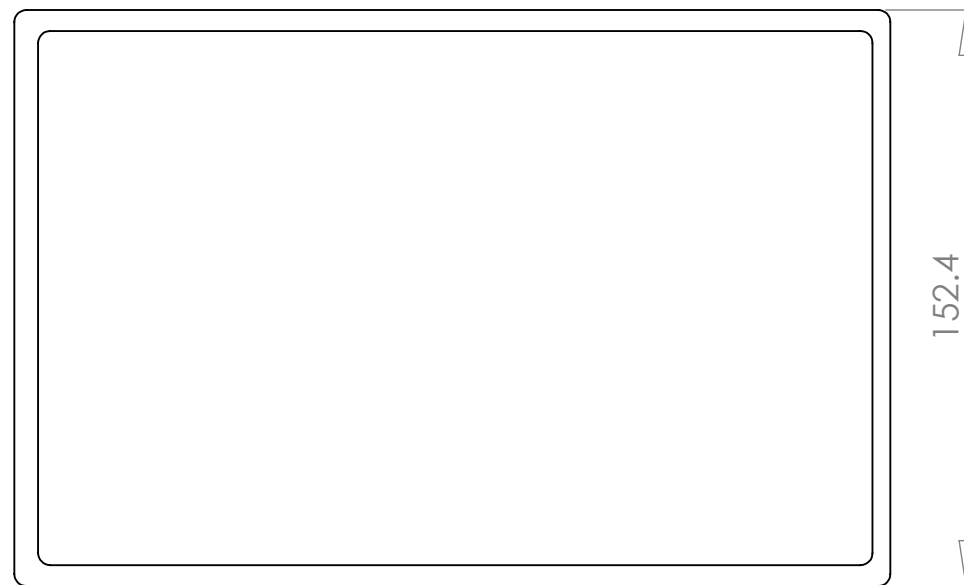
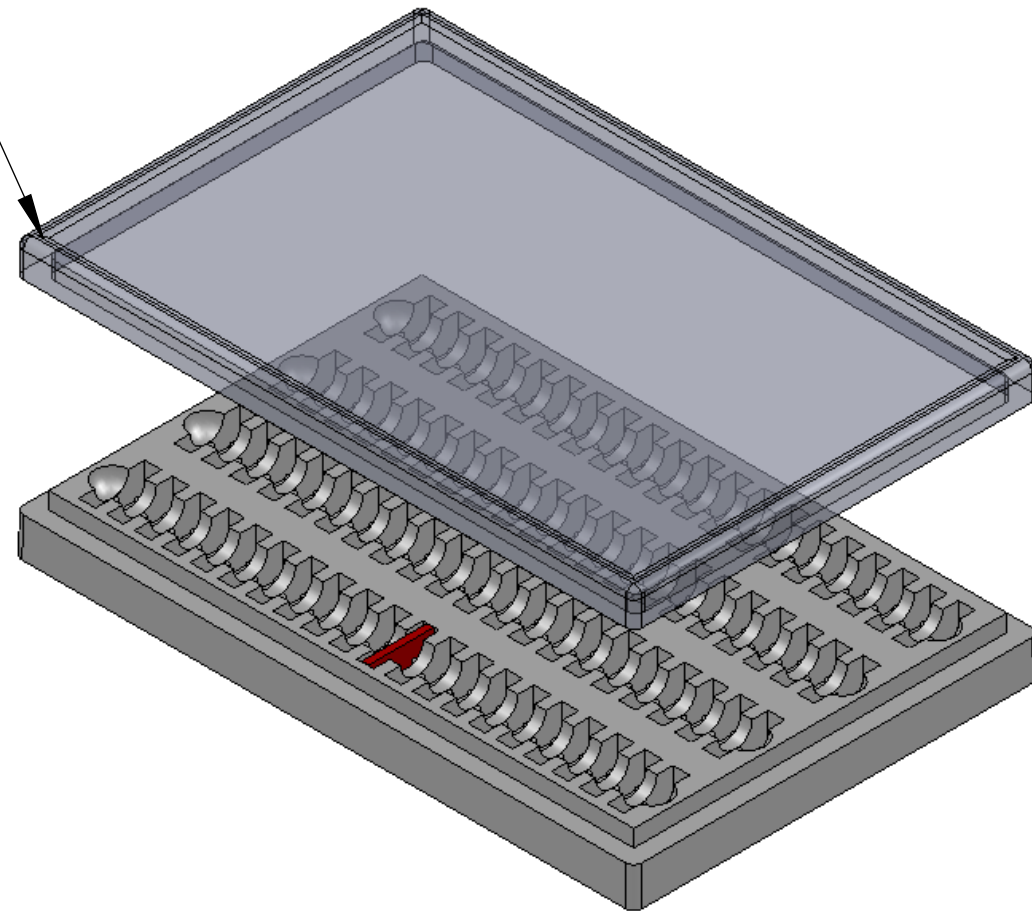


SIDE VIEW OF BASE

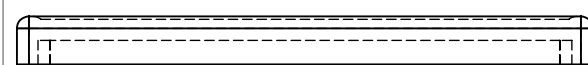


DETAIL A

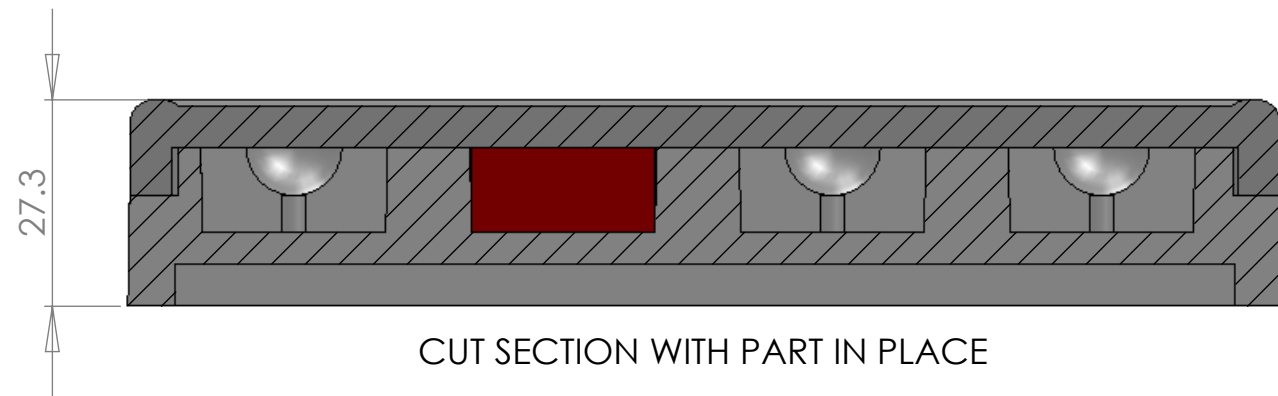
TRANSPARENT LID SHOWS SLOTS FOR 80 PCS.



BOTTOM VIEW OF LID



SIDE VIEW OF LID



CUT SECTION WITH PART IN PLACE

**Note:**

- 1) Material To be 64g/l density (4.0 lb/ft3) EPS, Static Dissipative
- 2) 1 Degree Draft TYP
- 3) Dimensions shown are in millimeters

**PROPRIETARY AND CONFIDENTIAL**  
 THE INFORMATION CONTAINED IN THIS DRAWING IS THE SOLE PROPERTY OF **Tempo Plastic Co., Inc.** ANY REPRODUCTION IN PART OR AS A WHOLE WITHOUT THE WRITTEN PERMISSION OF **Tempo Plastic Co., Inc.** IS PROHIBITED.

		UNLESS OTHERWISE SPECIFIED:		NAME	DATE	<b>Tempo Plastic Co., Inc.</b>	
		DIMENSIONS ARE IN INCHES		DRAWN	Steven Alatorre	June 22, 2009	TITLE: <b>101Base with 102 Lid</b>
		TOLERANCES:		CHECKED			
		FRACTIONAL ±		ENG APPR.			
		ANGULAR: MACH ± BEND ±		MFG APPR.			
		TWO PLACE DECIMAL ±		Q.A.			SIZE DWG. NO. REV
		THREE PLACE DECIMAL ±		COMMENTS:			<b>B</b>
		INTERPRET GEOMETRIC TOLERANCING PER:					SCALE: 1:1 SHEET 1 OF 1
		MATERIAL					
		FINISH					
NEXT ASSY	USED ON	APPLICATION		DO NOT SCALE DRAWING			