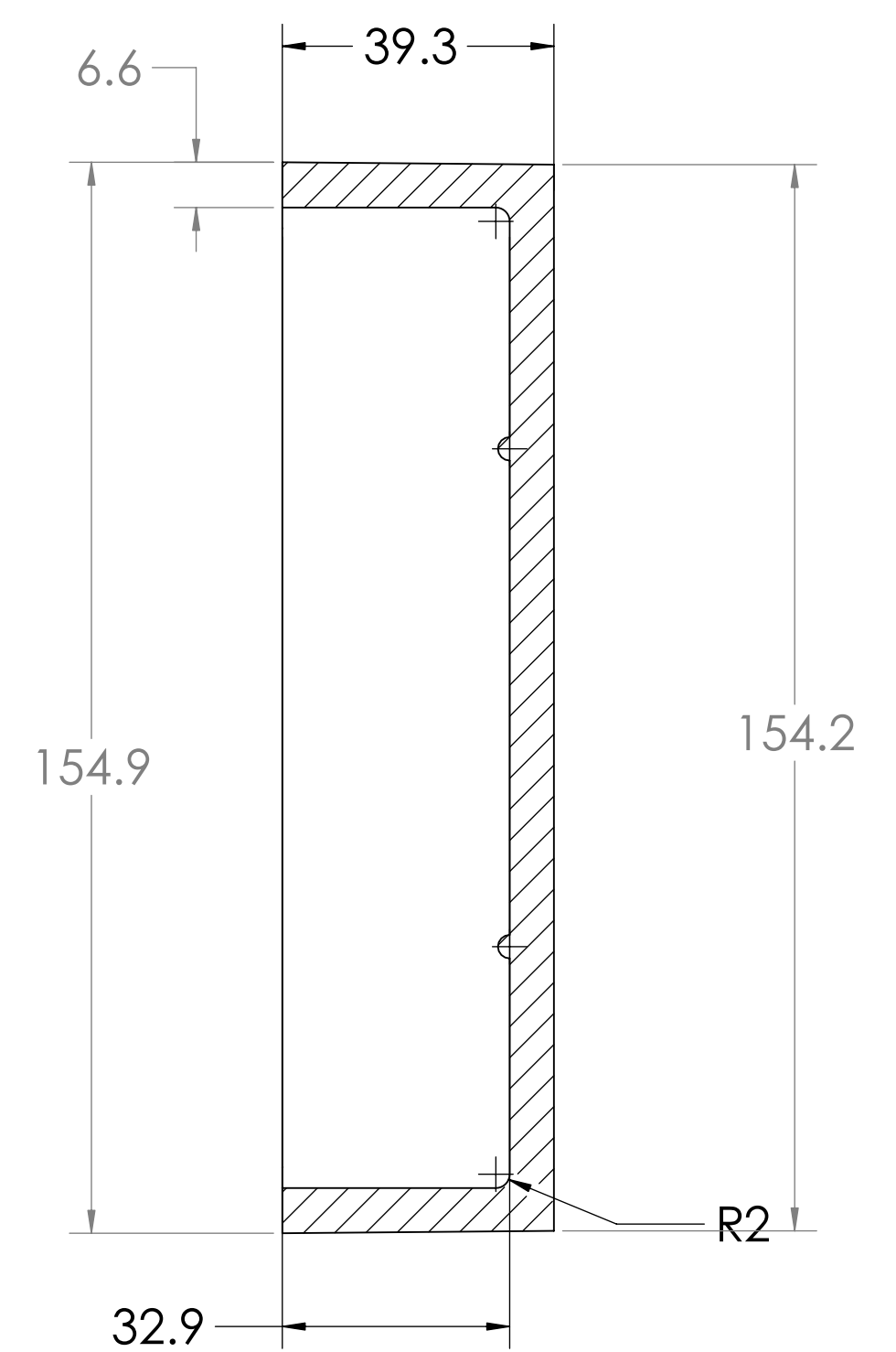
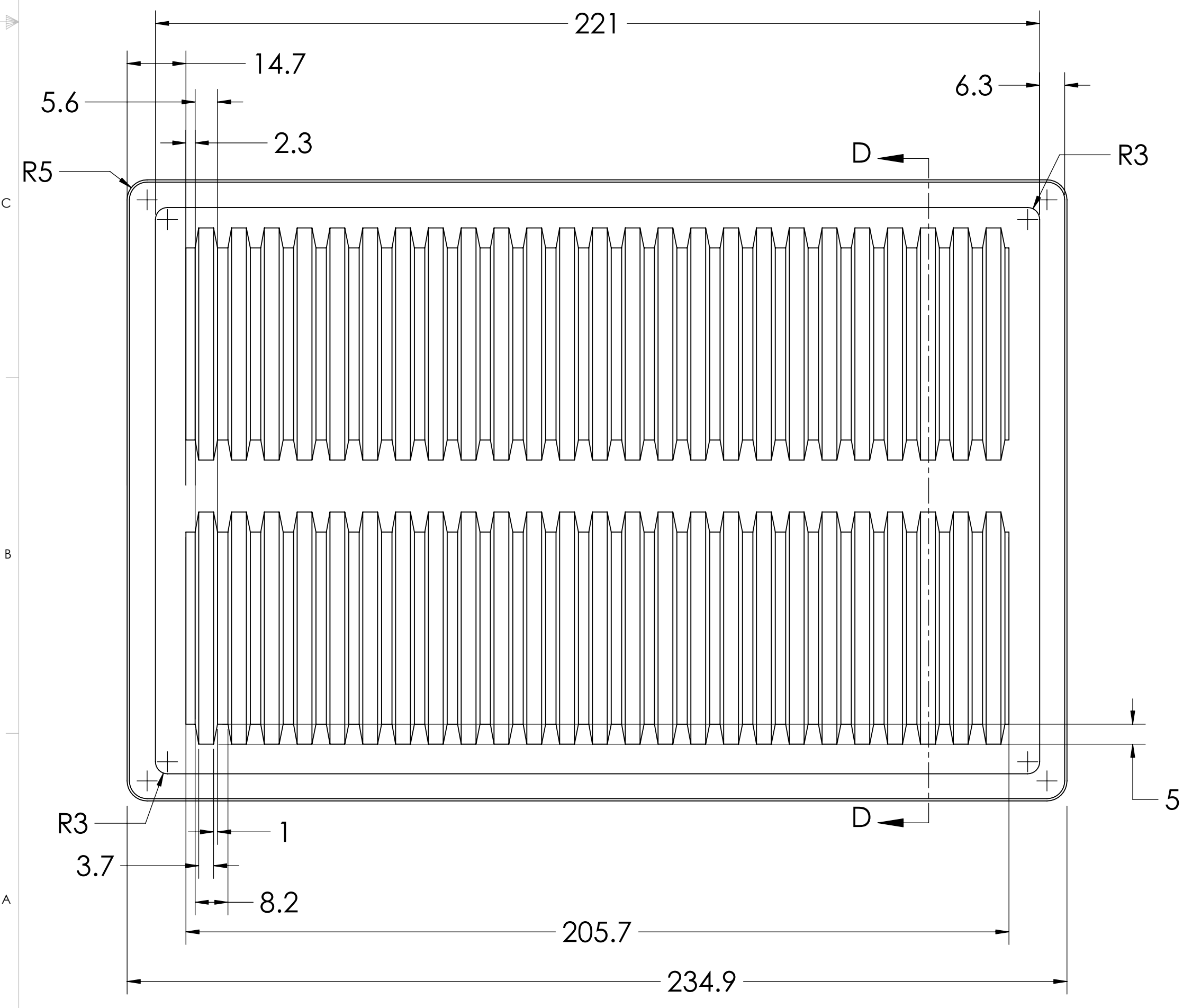
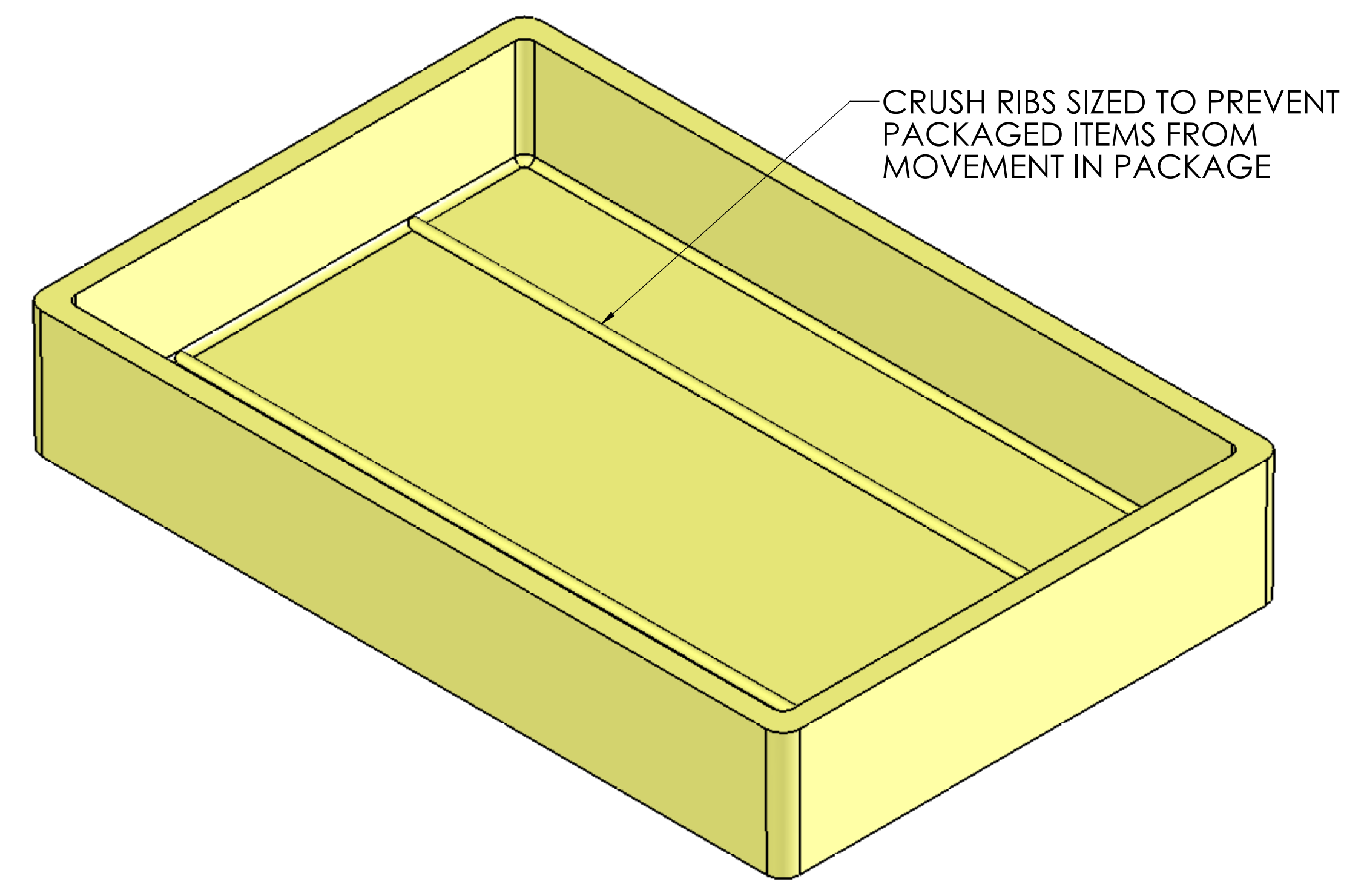


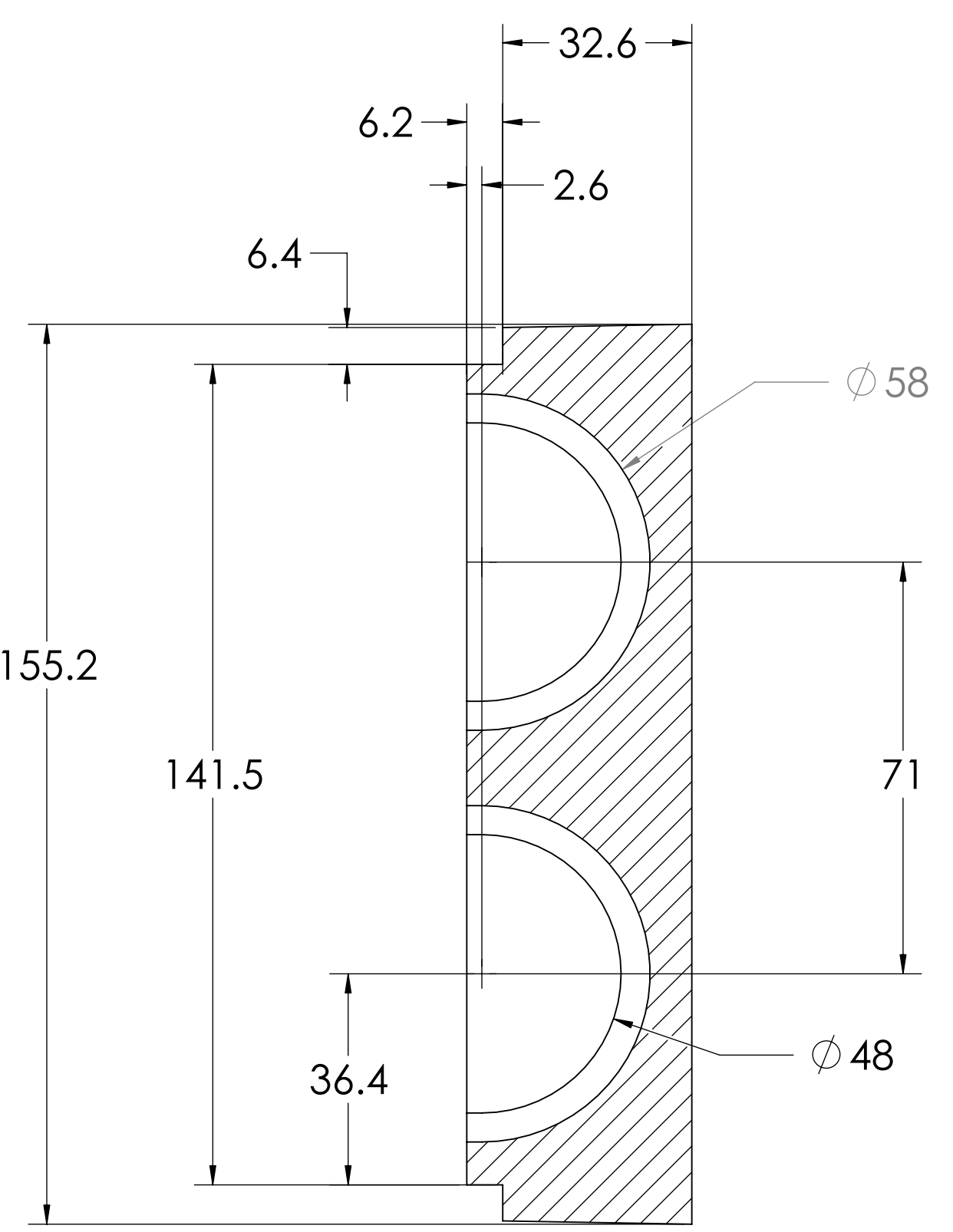
A208 50R2300 LID



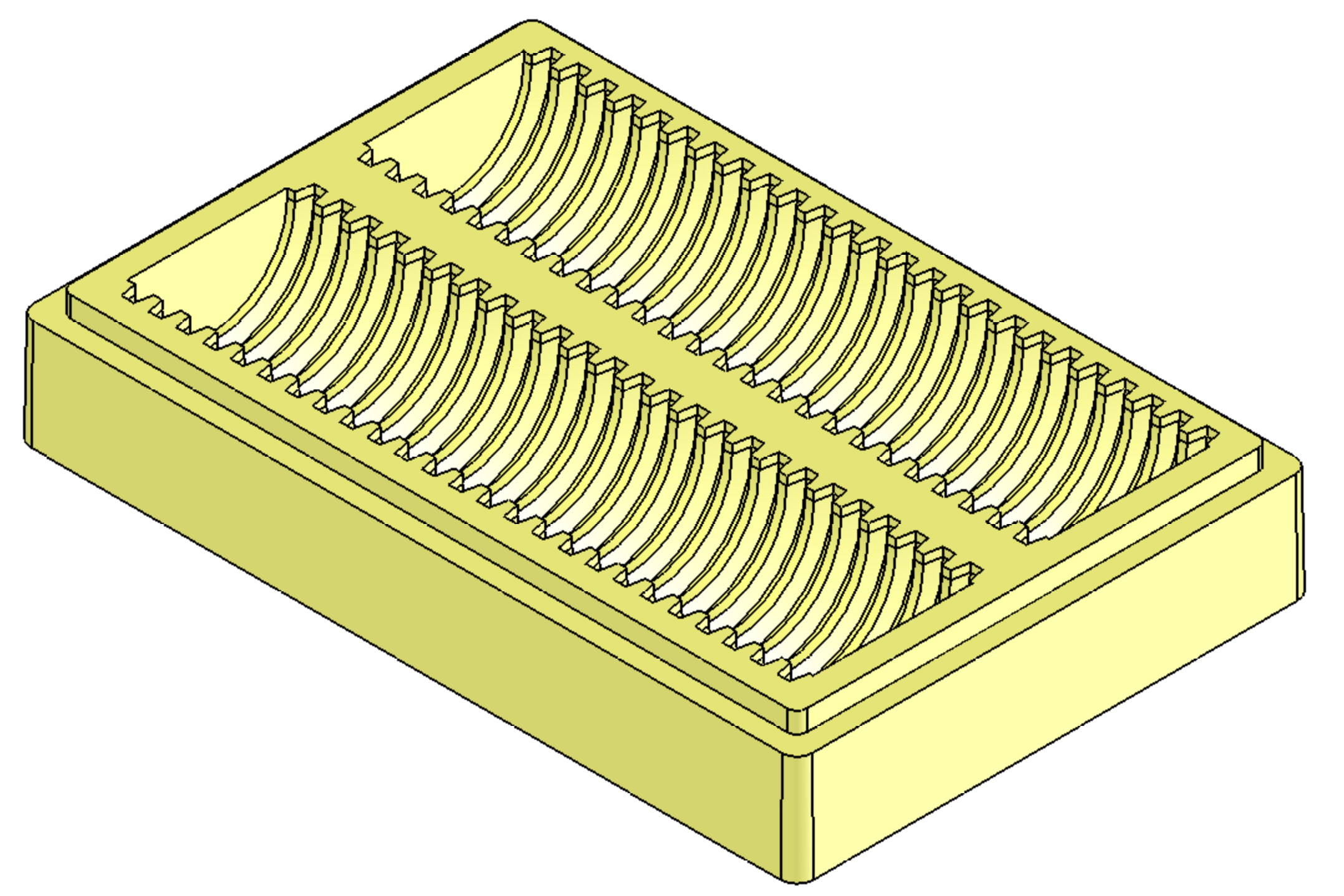
SECTION E-E



A208 50R2300 BASE



SECTION D-D



Note:

- 1) Material To be g/l density (lb/ft3) EPS W/Anti-Stat
- parts to weigh g minimum
- 2) 1 Degree Draft TYP
- 3) Volume = cubic inches
- 4) Check flatness on layout table

PROPRIETARY AND CONFIDENTIAL
THE INFORMATION CONTAINED IN THIS DRAWING IS THE SOLE PROPERTY OF Tempco Plastics Co., Inc. ANY REPRODUCTION IN PART OR AS A WHOLE WITHOUT THE WRITTEN PERMISSION OF Tempco Plastics Co., Inc IS PROHIBITED.

UNLESS OTHERWISE SPECIFIED:		NAME	DATE
DIMENSIONS ARE IN Millimeters	TOLERANCES:	DRAWN	J Ellis 20Jun06
FRACTIONAL ±	ANGULAR MATCH ±	CHECKED	
BEND ±	TWO PLACE DECIMAL ±	ENG APPR:	D Rogers 20Jun06
THREE PLACE DECIMAL ±		MFG APPR:	
INTERPRET GEOMETRIC TOLERANCING PER:		Q.A.	
MATERIAL: Dry Molded EPS		COMMENTS:	
See note 1			
NEXT ASSY	USED ON	FINISH	
APPLICATION			

TITLE: A208 50R2300 BASE & LID		
SIZE	DWG. NO.	REV
D	062006JRE	A
SCALE: 1:1.5	SHEET 1 OF 1	